

# ARGENTA SERIES

## IP66 STEEL WALL-MOUNTING CABINETS

Description: IP66 ROLLED STEEL WALL-MOUNTING CABINET 800x800x250 OPAQUE DOOR

Reference:  
**GN808025**

### Characteristics:

<b>Product type:</b>	Wall-mounting cabinet
<b>Dimensions cabinet:</b>	(AxBxC) 800x800x250 mm
<b>Installation:</b>	Surface
<b>Type of door:</b>	Single opaque door. Reversible
<b>Locking:</b>	5-mm double-bit lock - Two 1-points lock
<b>Finish:</b>	Coated with primer, and hardened polyester paint, textured, with UV protection
<b>Colour:</b>	RAL 7035
<b>Mounting plate:</b>	With flat mounting plate. 2-mm galvanised sheet steel
<b>Weight (kg):</b>	39,1
<b>Materials:</b>	Cold-rolled steel EN 10130+A1
<b>Thickness:</b>	Enclosure: 1,5 mm. Door: 1,5 mm. Cable entry lid: 2 mm.
<b>Sealing gasket:</b>	Injected polyurethane sealing gasket
<b>Door material:</b>	
<b>Capacity:</b>	
<b>Max. cabinet load:</b>	325 kg
<b>Max. mounting plate load:</b>	300 kg
<b>Max. door load:</b>	25 kg

### Technical data:

<b>Degree of protection:</b>	IP66
<b>NEMA degree of protection:</b>	NEMA 1, 12, 4
<b>Resistance to impact:</b>	IK10
<b>Ambient temperature range:</b>	-25 °C / +60 °C
<b>Maximum operating voltage:</b>	1000 V AC / 1500 V DC

### Certificates and standards:

<b>Directive:</b>	2014/35/EU
<b>Standards:</b>	IEC 62208, IEC 61439-1
<b>Certificates:</b>	UL508A



### Codes:

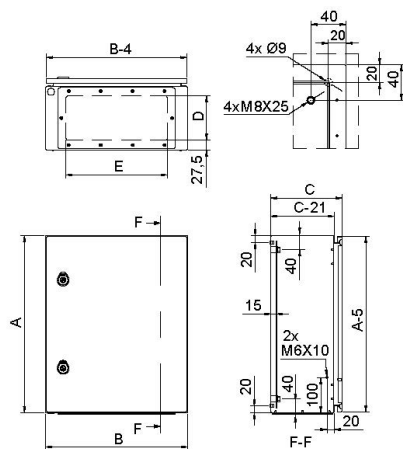
<b>EAN:</b>	8431044491295
<b>Customs tariff number:</b>	85.38.10.00
<b>ETIM 8.0:</b>	EC000261

# ARGENTA SERIES


## IP66 STEEL WALL-MOUNTING CABINETS

Description: IP66 ROLLED STEEL WALL-MOUNTING CABINET 800x800x250 OPAQUE DOOR

Reference: GN808025



Standard drawing

**Detailed drawing:**  <https://www.ide.es/downloads/planos/pdf/GN808025.pdf>  
 <https://www.ide.es/downloads/planos/dxf/GN808025.dxf>  
 <https://www.ide.es/downloads/planos/stp/GN808025.stp>

<b>Cable entry:</b>	(DxE) 125x685 mm	<b>Body to be flush-fitted:</b>	-
<b>Wall fixing:</b>	(HeightxWidth) 760x960 mm	<b>Wall fixing material:</b>	-
<b>Inside usable space:</b>	(HeightxWidthxDepth) 750x750x229 mm	<b>Glass door with transparent panel:</b>	-
<b>No. Hinges:</b>	3	<b>Door profiles:</b>	2

### Sustainability:

RoHS - REACH

### Supply:

Supplied in individual packaging containing cabinet, plate and accessory bag. Mounting plate is supplied assembled inside the cabinet.

### Product end of life:

It does not require specific recycling operations.

### Recommended applications:

Industrial environments, manufacturing companies requiring a high degree of protection against dust, splashes and impacts.