

ARGENTA SERIES

IP66 STEEL WALL-MOUNTING CABINETS

Description: IP66 ROLLED STEEL WALL-MOUNTING CABINET 600x500x250 OPAQUE DOOR

Reference:
GN605025

Characteristics:

| | |
|----------------------------------|--|
| Product type: | Wall-mounting cabinet |
| Dimensions cabinet: | (AxBxC) 600x500x250 mm |
| Installation: | Surface |
| Type of door: | Single opaque door. Reversible |
| Locking: | 5-mm double-bit lock - Two 1-points lock |
| Finish: | Coated with primer, and hardened polyester paint, textured, with UV protection |
| Colour: | RAL 7035 |
| Mounting plate: | With flat mounting plate. 2-mm galvanised sheet steel |
| Weight (kg): | 18,8 |
| Materials: | Cold-rolled steel EN 10130+A1 |
| Thickness: | Enclosure: 1,2 mm. Door: 1,5 mm. Cable entry lid: 2 mm. |
| Sealing gasket: | Injected polyurethane sealing gasket |
| Door material: | |
| Capacity: | |
| Max. cabinet load: | 275 kg |
| Max. mounting plate load: | 250 kg |
| Max. door load: | 25 kg |

Technical data:

| | |
|-----------------------------------|-----------------------|
| Degree of protection: | IP66 |
| NEMA degree of protection: | NEMA 1, 12, 4 |
| Resistance to impact: | IK10 |
| Ambient temperature range: | -25 °C / +60 °C |
| Maximum operating voltage: | 1000 V AC / 1500 V DC |

Certificates and standards:

| | |
|----------------------|------------------------|
| Directive: | 2014/35/EU |
| Standards: | IEC 62208, IEC 61439-1 |
| Certificates: | UL508A |



Codes:

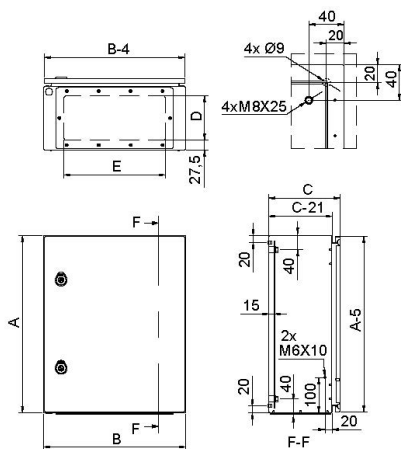
| | |
|-------------------------------|---------------|
| EAN: | 8431044490694 |
| Customs tariff number: | 85.38.10.00 |
| ETIM 8.0: | EC000261 |

ARGENTA SERIES

IP66 STEEL WALL-MOUNTING CABINETS

Description: IP66 ROLLED STEEL WALL-MOUNTING CABINET 600x500x250 OPAQUE DOOR

Reference: GN605025



Standard drawing

Detailed drawing:  <https://www.ide.es/downloads/planos/pdf/GN605025.pdf>
 <https://www.ide.es/downloads/planos/dxf/GN605025.dxf>
 <https://www.ide.es/downloads/planos/stp/GN605025.stp>

| | | | |
|-----------------------------|-------------------------------------|---|---|
| Cable entry: | (DxE) 125x385 mm | Body to be flush-fitted: | - |
| Wall fixing: | (HeightxWidth) 260x260 mm | Wall fixing material: | - |
| Inside usable space: | (HeightxWidthxDepth) 550x450x229 mm | Glass door with transparent panel: | - |
| No. Hinges: | 2 | Door profiles: | 2 |

Sustainability:

RoHS - REACH

Supply:

Supplied in individual packaging containing cabinet, plate and accessory bag. Mounting plate is supplied unassembled inside the packaging.

Product end of life:

It does not require specific recycling operations.

Recommended applications:

Industrial environments, manufacturing companies requiring a high degree of protection against dust, splashes and impacts.