

# ARGENTA SERIES

## IP66 STEEL WALL-MOUNTING CABINETS

Description: IP66 ROLLED STEEL WALL-MOUNTING CABINET 600x500x150 OPAQUE DOOR

Reference:  
**GN605015**

### Characteristics:

Product type:	Wall-mounting cabinet
Dimensions cabinet:	(AxBxC) 600x500x150 mm
Installation:	Surface
Type of door:	Single opaque door. Reversible
Locking:	5-mm double-bit lock - Two 1-points lock
Finish:	Coated with primer, and hardened polyester paint, textured, with UV protection
Colour:	RAL 7035
Mounting plate:	With flat mounting plate. 2-mm galvanised sheet steel
Weight (kg):	16,2
Materials:	Cold-rolled steel EN 10130+A1
Thickness:	Enclosure: 1,2 mm. Door: 1,5 mm. Cable entry lid: 2 mm.
Sealing gasket:	Injected polyurethane sealing gasket
Door material:	
Capacity:	
Max. cabinet load:	275 kg
Max. mounting plate load:	250 kg
Max. door load:	25 kg

### Technical data:

Degree of protection:	IP66
NEMA degree of protection:	NEMA 1, 12, 4
Resistance to impact:	IK10
Ambient temperature range:	-25 °C / +60 °C
Maximum operating voltage:	1000 V AC / 1500 V DC

### Certificates and standards:

Directive:	2014/35/EU
Standards:	IEC 62208, IEC 61439-1
Certificates:	UL508A



### Codes:

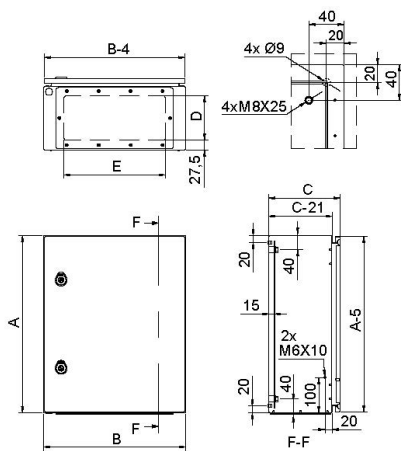
EAN:	8431044490670
Customs tariff number:	85.38.10.00
ETIM 8.0:	EC000261

# ARGENTA SERIES

## IP66 STEEL WALL-MOUNTING CABINETS

Description: IP66 ROLLED STEEL WALL-MOUNTING CABINET 600x500x150 OPAQUE DOOR

Reference: GN605015



Standard drawing

**Detailed drawing:** <https://www.ide.es/downloads/planos/pdf/GN605015.pdf>  
<https://www.ide.es/downloads/planos/dxf/GN605015.dxf>  
<https://www.ide.es/downloads/planos/stp/GN605015.stp>

<b>Cable entry:</b>	(DxE) 65x285 mm	<b>Body to be flush-fitted:</b>	-
<b>Wall fixing:</b>	(HeightxWidth) 260x260 mm	<b>Wall fixing material:</b>	-
<b>Inside usable space:</b>	(HeightxWidthxDepth) 550x450x129 mm	<b>Glass door with transparent panel:</b>	-
<b>No. Hinges:</b>	2	<b>Door profiles:</b>	2

### Sustainability:

RoHS - REACH

### Supply:

Supplied in individual packaging containing cabinet, plate and accessory bag. Mounting plate is supplied unassembled inside the packaging.

### Product end of life:

It does not require specific recycling operations.

### Recommended applications:

Industrial environments, manufacturing companies requiring a high degree of protection against dust, splashes and impacts.