

ARGENTA SERIES

IP66 STEEL WALL-MOUNTING CABINETS

Description: IP66 ROLLED STEEL WALL-MOUNTING CABINET 1400x600x400 OPAQUE DOOR

Reference:
GN1406040

Characteristics:

Product type:	Wall-mounting cabinet
Dimensions cabinet:	(AxBxC) 1400x600x400 mm
Installation:	Surface
Type of door:	Single opaque door. Reversible
Locking:	5-mm double-bit lock - One 3-points lock
Finish:	Coated with primer, and hardened polyester paint, textured, with UV protection
Colour:	RAL 7035
Mounting plate:	With flat mounting plate. 2-mm galvanised sheet steel
Weight (kg):	58,4
Materials:	Cold-rolled steel EN 10130+A1
Thickness:	Enclosure: 1,5 mm. Door: 1,5 mm. Cable entry lid: 2 mm.
Sealing gasket:	Injected polyurethane sealing gasket
Door material:	
Capacity:	
Max. cabinet load:	390 kg
Max. mounting plate load:	350 kg
Max. door load:	40 kg

Technical data:

Degree of protection:	IP66
NEMA degree of protection:	NEMA 1, 12, 4
Resistance to impact:	IK10
Ambient temperature range:	-25 °C / +60 °C
Maximum operating voltage:	1000 V AC / 1500 V DC

Certificates and standards:

Directive:	2014/35/EU
Standards:	IEC 62208, IEC 61439-1
Certificates:	



Codes:

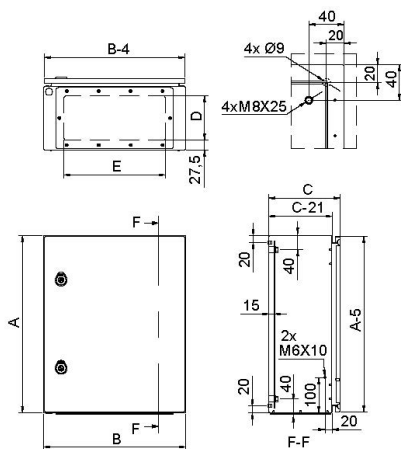
EAN:	8431044369822
Customs tariff number:	85.38.10.00
ETIM 8.0:	EC000261

ARGENTA SERIES


IP66 STEEL WALL-MOUNTING CABINETS

Description: IP66 ROLLED STEEL WALL-MOUNTING CABINET 1400x600x400 OPAQUE DOOR

Reference: GN1406040



Standard drawing

Detailed drawing:  <https://www.ide.es/downloads/planos/pdf/GN1406040.pdf>
 <https://www.ide.es/downloads/planos/dxf/GN1406040.dxf>
 <https://www.ide.es/downloads/planos/stp/GN1406040.stp>

Cable entry:	(DxE) 125x485 mm	Body to be flush-fitted:	-
Wall fixing:	(HeightxWidth) 1160x1160 mm	Wall fixing material:	-
Inside usable space:	(HeightxWidthxDepth) 1350x550x379 mm	Glass door with transparent panel:	-
No. Hinges:	3	Door profiles:	2

Sustainability:

RoHS - REACH

Supply:

Supplied in individual packaging containing cabinet, plate and accessory bag. Mounting plate is supplied assembled inside the cabinet.

Product end of life:

It does not require specific recycling operations.

Recommended applications:

Industrial environments, manufacturing companies requiring a high degree of protection against dust, splashes and impacts.