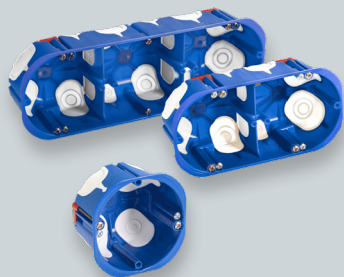




DOMOS-K

Flush-fit wiring boxes
(Hollow walls)



- Wiring boxes of 1, 2 and 3 crowns linkable.
- Extinguishing material PP+TPE.
- Colour: Blue base RAL 5002.
- Entries with double elastic material injection.

The Wiring boxes are specially designed to be installed in prefabricated walls (such as plasterboard, wood, fibreboard, etc.). Manufactured with high-quality and high-strength materials that make installation and flush-fitting easy. Designed for circuits whose voltage is not greater than 400 V in alternating current and a maximum current of 16 A.



DOMOS-K Technical Specifications

- **Glow wire resistance:** 850 °C.
- **Ambient temperature range:** -5 °C / +40 °C.
- **Maximum operating voltage:** 400 V.

DOMOS-K Certifications

Compliant with the Low Voltage Directive 2014/35 EU.
Standards: UNE-EN 60670-1-22.

DOMOS-K

Flush-fit wiring boxes - Hollow walls

DOMOS-K references



Reference	Dimensions of the flush-fit gap			Crown (mm)	Entry holes	Pack
	HEIGHT	WIDTH	DEPTH			
D70/1K	-	Ø68	48	68	2xØ16-20 2xØ20-25	160
D70/2K	139	68	48	68	2xØ4-10 2xØ4-20 2xØ10-20 2xØ10-25	80
D70/3K	210	68	48	68	4xØ4-10 6xØ10-20 2xØ10-25	50

The screws for hollow wall-mounting are supplied assembled in all references.
 All references with double-injection elastic entries.
 Reference D70/1K supplied with 1 bag of connecting pieces; Reference 45930.

DOMOS-K accessories



	Pack	Reference
Connecting piece (Bag 50 pcs.)	1	45930

