



PRYMA

IP67 Boxes for industrial sockets

The PRYMA series comprises a set of enclosures for surface installation, manufactured with halogen-free high-durability plastic materials intended to house power sockets or control and signalling elements.

They are intended for installation in places requiring power points for fixed machinery, portable tools or auxiliary electrical equipment.

Their sphere of application therefore includes industrial premises, workshops, warehouses, depot areas, building sites, etc., or any place requiring a high degree of protection and safety.



PRYMA Technical Specifications

- Degree of protection: IP67.
- Resistance to impact: IK08.
- Glow wire resistance: 650 °C.
- Ambient temperature range: -25 °C / +40 °C.
- Maximum operating voltage: 1000 V AC/1500 V DC.
- Double insulation: Class II.

PRYMA Certifications

Compliant with the Low Voltage Directive 2014/35/EU. Standards: UNE-EN 62208 and UNE-EN 61439-1 (as applicable).

PRYMA

IP67 boxes for industrial sockets



Product series

- Surface enclosures with a capacity of 9, 13 and 26 modules with transparent window.

Material

- Halogen-free plastic materials, with UV protection.
- Base and frame: ABS RAL 7035.
- Transparent window: PC tinted window.

Supply

- Supplied in individual cardboard packaging. When several items are sent together, they are bundled together with transparent film.
- The enclosure is supplied with the windows assembled on the cover and the hinges attached to the base, leaving the cover totally free for handling by the installer.
- The rails are supplied assembled to the base for the 9-module models. For the 13- and 26-module models they are supplied disassembled in a bag containing the rail, supports and screws.
- Accessory bag:
 - 11x13 plastic screws.
 - Grey module cover (6 modules).
 - Module identification strips.
 - Hermetic caps (Ref. No. 1712GM and 1724GM).
 - Assembly instructions.

Intended for the industrial sector, where a high degree of safety and maximum protection are required

DIN rail attachment

- The rail can be attached to the enclosure in two different positions: to the base or to the cover.

Attachment of rail to cover:

- 178M, 178P, 1712GM and 1724GM boxes: two supports are screwed to the cover, and the DIN rail is then screwed onto the supports.

Attachment of rail to base:

- 178M and 178P boxes: by pressing the rail gently into two grooved housings. These boxes are supplied with the rail assembled on the base.

- 1712GM and 1724GM boxes: two supports are screwed to the base and the DIN rail is then screwed onto the supports. The DIN rail can be placed at two different heights, offering the possibility of fitting elements from 53 mm to 70 mm for the first position and 92 mm for the second one. The boxes are supplied with the bag of accessories required for installation.



Base

- It has four completely flat walls, permitting the installation of small elements such as pilot lights, pushbuttons, etc.
- The side walls have vertical ribs on the inside that provide rigidity to protect against possible deformation.
- The top and bottom sides are also flat, with three pre-marked points that can be used as a reference for inserting the trunking pipe.
- The bottom of the base is fitted with supports for attaching neutral and earth bars, as well as the housings for attaching the DIN rail.
- The base has raised lines with different housings for fixing mounting plates, rails, bars, etc.

Wall-mounting

- 178P and 178M boxes are secured to the wall by means of screws placed in the locking screw housings on the enclosure.
- 1712GM and 1724GM boxes are mounted directly from the housings located on the base for this purpose. These housings are covered with watertight caps (supplied in the accessories bag) to maintain the degree of protection and dielectric strength.

Frame

- The frame is used for placing the power sockets. It has a vertical blank area and another one with an inclined plane to facilitate base installation and to prevent cable bundles from crossing.
- The frame perimeter has a sealing gasket to guarantee protection from dust and water.
- The inside of the frame has reinforcement ribs to guarantee the part's rigidity.
- The frame-base assembly is closed by means of 11×23 plastic pan-head and flat-tip screws (supplied in the accessory bag).
- The boxes can be sealed at two points.



Window

- Transparent tinted windows with UV protection.
- The window presses against the sealing gasket to guarantee the assembly's IP protection.
- The window opens vertically and is closed by means of two threaded screws.
- Possibility of support with padlock supplied as an accessory (Ref. 77670).

Frame-base hinge system

- This series has a frame-base hinge system that enhances manoeuvrability between both parts, guaranteeing an opening of 180°.
- The hinges' high resistance means that when the base is secured to the wall, the frame can be left hanging even if it has been totally installed with sockets or with equipment.
- The unit is assembled and disassembled by gently pressing on the ends of the part, which is symmetrical and reversible.

PRYMA

IP67 boxes for industrial sockets

IP67 wall-mounted enclosures for power sockets

Reference No.	No. of modules	Dimensions			Weight	Power dissipation according to temperature increase °C P[W]				
		HEIGHT	WIDTH	DEPTH		20	25	30	35	40
178P	1x9 DIN rail	284	222	122	1.2	13.2	16.5	19.8	23.1	26.4
178M	1x9 DIN rail	369	222	130	1.4	16.9	21.1	25.4	29.6	33.8
1712GM	1x13 DIN rail	504	297	177	2.7	31.1	38.8	46.6	54.4	62.1
1724GM	2x13 (26) DIN rail	504	297	177	3.0	31.1	38.8	46.6	54.4	62.1

HALOGEN-FREE PLASTIC MATERIALS, WITH UV PROTECTION
 Frame and base in ABS RAL 7035 grey.
 PC transparent window, tinted.
 IP67 - Surface.



1x9 modules
178P



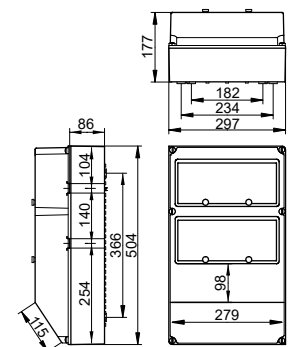
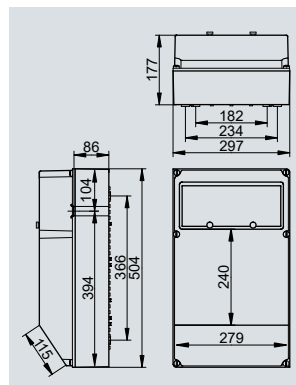
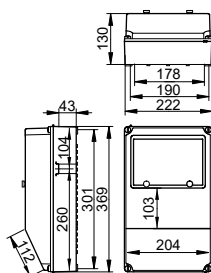
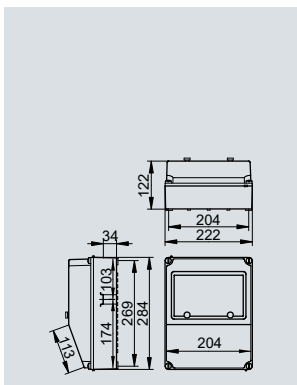
1x9 modules
178M



1x13 modules
1712GM



2x13 (26) modules
1724GM



IP67 wall-mounted enclosures for power sockets. With neutral and earth bars

Reference No.	No. of modules	Dimensions			Weight	Power dissipation according to temperature increase °C P(W)				
		HEIGHT	WIDTH	DEPTH		20	25	30	35	40
178P/RR	1x9 DIN rail	284	222	122	1.3	13.2	16.5	19.8	23.1	26.4
178M/RR	1x9 DIN rail	369	222	130	1.5	16.9	21.1	25.4	29.6	33.8
1712GM/RR	1x13 DIN rail	504	297	177	2.8	31.1	38.8	46.6	54.4	62.1
1724GM/RR	2x13 (26) DIN rail	504	297	177	3.1	31.1	38.8	46.6	54.4	62.1

HALOGEN-FREE PLASTIC MATERIALS, WITH UV PROTECTION

Frame and base in ABS RAL 7035 grey.

PC transparent window, tinted.

IP67 - Surface.

/RR: With neutral and earth bars.

They are intended for places requiring power points for fixed machinery, portable tools or auxiliary electrical equipment

PRYMA COMPLET

IP67 boxes for industrial sockets

Special assemblies



Plain boxes.



Boxes with assembled and wired power sockets.

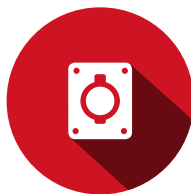


Boxes with assembled and wired power sockets and protections.

How to proceed



1. SELECT THE BOX.



2. CHOOSE THE POWER SOCKETS.



3. INDICATE THE REQUIRED PROTECTION.



4. SUBMIT ALL THE INFORMATION TO OUR TECHNICAL DEPARTMENT.

You can request a quotation and technical assessment at export@ide.es

Special assemblies with power sockets can be supplied in any combination, assembled and wired, with no minimum order quantity

Proposal of sockets for Pryma Complet boxes

IP67 SCHUKO-TYPE FLUSH-FIT SOCKETS



REF.	Poles	I	Voltage
00105	2P+E	16A	250 V

IP67 FLUSH-FIT SOCKETS



REF.	Poles	I	Voltage
02801	2P+E	16 A	200/250 V
03802	3P+E	16 A	380/415 V
03803	3P+N+E	16 A	200/415 V
02804	2P+E	32 A	200/250 V
03805	3P+E	32 A	380/415 V
03806	3P+N+E	32 A	200/415 V

See our full range of plugs and sockets on Mundial series



IDE ELECTRIC

Head office

Leonardo da Vinci 2
Pol. Ind. Los Huertos
E-50800 Zuera (Zaragoza)
SPAIN

Warehouse and logistics

Guttemberg 48
Pol. Ind. Los Huertos
E-50800 Zuera (Zaragoza)
SPAIN

Phone: +34 976 451 080

E-mail: ide@ide.es

Web: www.ide.es

