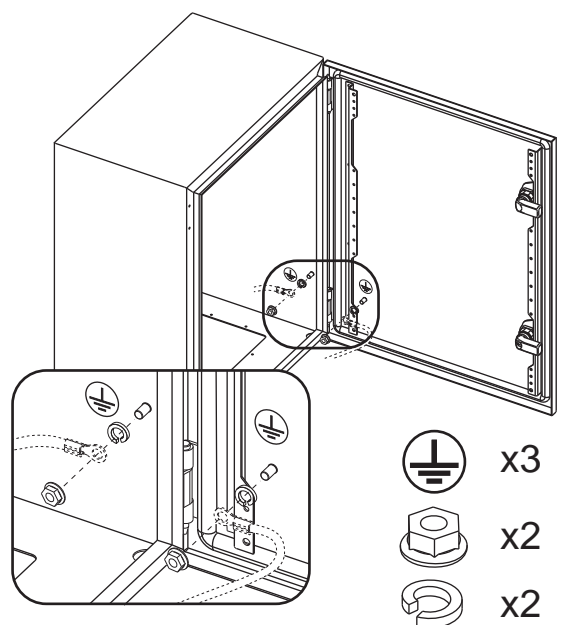
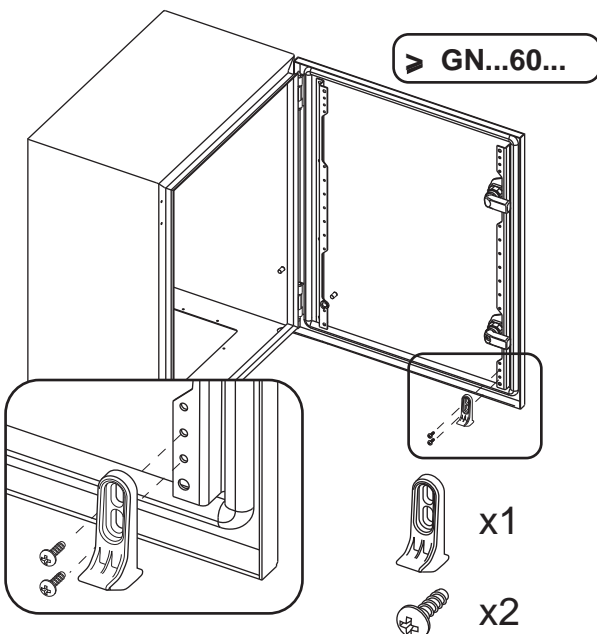
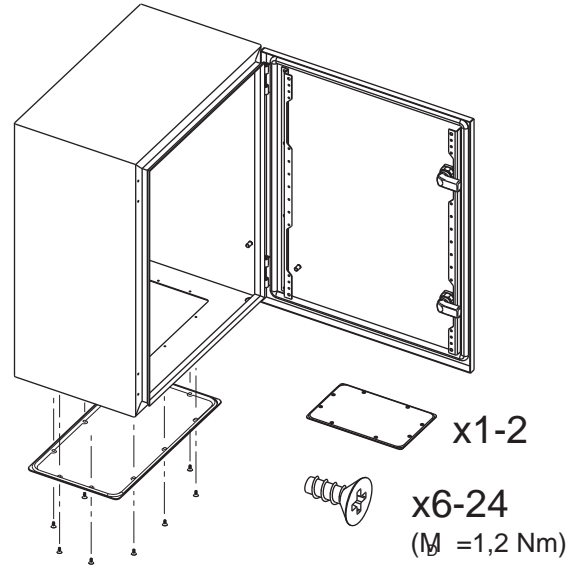
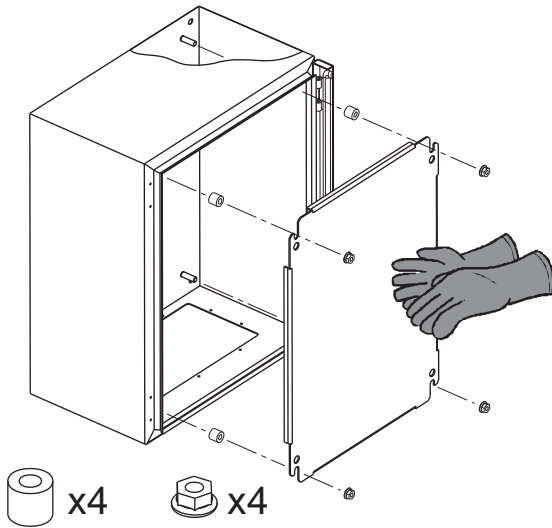
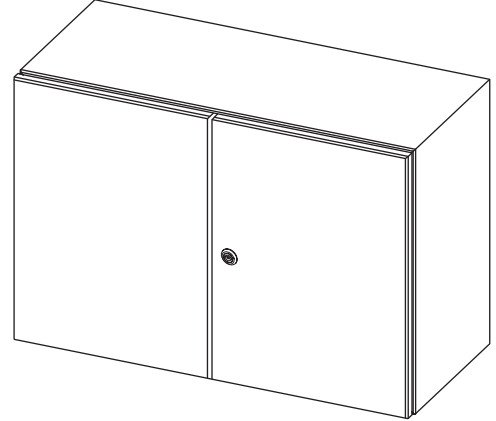
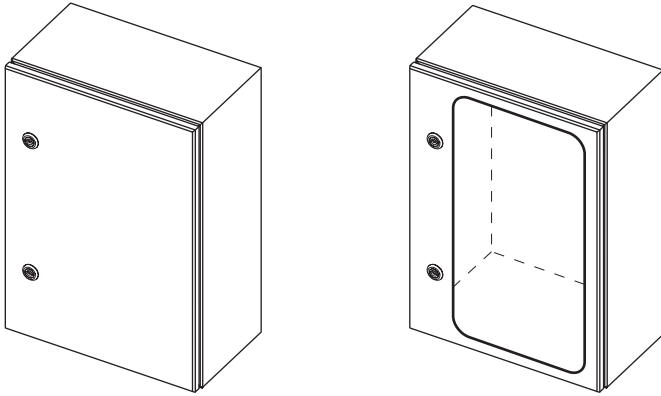


Instrucciones de montaje  
 Installation Instructions  
 Notice d'installation  
 Istruzioni per il montaggio  
 Montageanweisung  
 Montagehandleiding

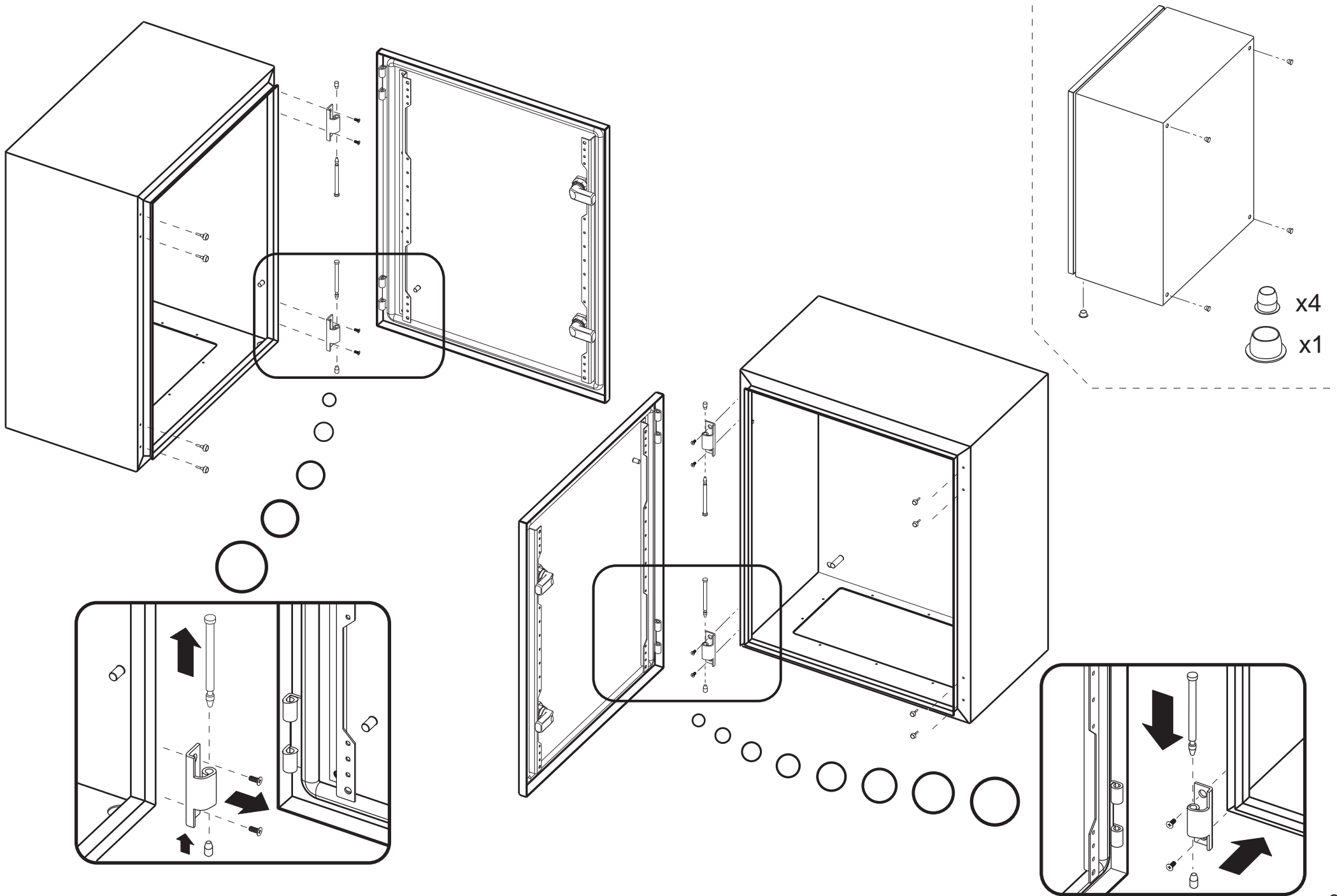
Montagevejledning  
 Οδηγίες εγκατάστασης  
 Instruções de montagem  
 Monteringsanvisning  
 Asennusohje  
 Návod k montáži

Paigaldusjuhend  
 Szerelési utasítás  
 Montāžas instrukcija  
 Montavimo instrukcija  
 Instrukcja montażu  
 Navodila za montažo

Návod na montáž  
 Монтажни инструкции  
 Instruções de montaj  
 Инструкция по монтажу  
 安装说明



If the enclosure is provided with openings for field installed equipment, this equipment shall have the same or better type rated designation in order to maintain the environmental type. Si la envolvente dispone de aberturas para la instalación n de equipos in situ, estos equipos deberán de tener el mismo o mejor rango de tipos (type) para mantener el tipo medioambiental (type)



x4  
x1